



Chester Elementary School

Mr. Michael K. Barile, Principal

23 Ridge Road, Chester, Connecticut 06412

Phone: 860-526-5797 Fax: 860-526-3570

www.chester.k12.ct.us

January 2010



"At Chester Elementary School, we resolve this new year to continue to do all we can in order to prepare our students to be caring, productive and successful citizens in the 21st century."

Inside this issue:

Important Dates	2
Important Reminders	2
Service Learning Update	3
Snow Day Play	3
Buddy Classes	3
Social Development Info	4
Book of the Month Info	4
Parks and Recreation	5

A Letter From the Principal

Dear Parents,

I would like to extend my best wishes for the new year. The staff and I are looking forward to a successful 2010.

Chester Elementary was very busy during the month of December. As you will see on the next few pages, students were engaged in various activities and programs to support their learning and develop both academically and socially.

As we begin this new year, I would like to take the opportunity to inform you of some procedures. I hope you find the information useful. As always, if you have a comment, question or concern, please feel free to contact me.

First, I ask for your assistance in insuring that students are on time for school. As a reminder, all students should arrive prior to 8:20 am. Those students who are not in the building by 8:25 am are considered tardy. Recently, there has been an increase in the number of students late for school. Hopefully this reminder will help reduce this number.

Another procedure that I would like to explain is how we determine if recess will be held indoor or outdoor. It is our goal that recess be held outside. However, if the temperature falls to 20 degrees or below, including wind chill, a decision to hold recess indoors will be

made. School personnel will reference www.weather.com and use the "Feels Like" number which is typically lower as it takes the wind chill factor into account. Please make sure your child comes prepared with proper clothing and attire for the weather.

On another note, please continue to encourage your child to read at home. In addition, model positive reading habits yourself. The act of modeling and getting excited about what you read will consequently have a positive impact on your child's reading habits.

Please know that your child is our top priority and we look forward to continuing our work together.

I thank you for your continued support and partnership. At Chester Elementary School, we resolve this new year to continue to do all we can in order to prepare our students to be caring, productive and successful citizens in the 21st century.

As always it is an honor to be serving as principal of this fine school.

*Your Partner in
Education,*

Michael K. Barile
Principal

Important Dates to Remember

January

- Jan. 5 (T) PTO Meeting
7:00 pm—Library
- Jan. 8 (F) Early Dismissal at 1:00 pm
Professional Development
- Jan. 12 (T) Band & Chorus Concert
1:45 pm Rehearsal—Gym
6:15 pm—Gym
- Jan. 14 (Th) Town Meeting—Gr. 2 Hosts
8:45 am—Gym
- Jan. 18 (M) Martin Luther King Jr. Day
No School
- Jan. 19 (T) Full Professional Day
No School for Students
- Jan. 25 (M) Field Trip—Grade 1
Henry & Mudge Play
University of Hartford
- Jan. 29 (F) BINGO Night
John Winthrop Cafeteria
5:30 pm

February

- Feb. 1 (M) Cultural Arts Performance
Civil War Soldier Gr. 4-6
8:45 am—Gym
- Feb. 2 (T) PTO Meeting
7:00 pm—Library
- Feb. 10 (W) Grade 2—Animal Report
Presentations
9:00—11:45 am
1:00—2:00 pm
- Feb. 11 (Th) Town Meeting
2:15 pm—Gym
- Feb. 12 (F) Early Dismissal at 1:00 pm
Professional Development
- Feb. 15-19 Winter Vacation

March

- Mar. 2 (T) PTO Meeting
7:00 pm—Library
- Mar. 1-26 CMT Administration
Grades 3-6
- Mar. 18 (Th) Social Development Night
Time—TBD
- Mar. 24—26 Early Dismissal Days
Parent/Teacher Conferences
- Mar. 24-26 PTO Book Fair



January 12th—Winter Chorus & Band Concerts in the school gymnasium beginning at 6:15 pm.

Important Reminders

Concert: Our Chorus and Band Concert is scheduled for Tuesday, January 12th. If the concert has to be postponed due to weather it will occur at the same time on Wednesday, January 13th.

Pickups: Please wait inside the gym when signing your child out. The hallway can easily become crowded.

Service Learning—Gateway Donations

“Our collection baskets overflowed with the special personal items so needed by the residents of Gateway.”



We would like to extend a big thank you to Chester students and families for your generous support during the holiday season for the Gateway Community Treatment Center. Our collection baskets overflowed with the special personal items so needed by the residents of Gateway.

Our gifts are packaged and distributed as holiday presents to the clients at their annual holiday party. Thank you once again for making the holidays bright and special for our neighbors in need.

Grade 4 “Snow Day” Play

“All in attendance were very impressed by the hard work that each student exhibited.”



On December 23rd, the entire school community was treated to a play entitled “Snow Day.” It was performed by our fourth graders. All members of the fourth grade participated in this performance. All in attendance were very impressed by the hard work that each student exhibited. I want to personally congratulate each and everyone for doing such a great job. Way to go! Also, thank you to Ms. Clark, Ms. Mantie, Mr. O’Brien, Ms. Gister and Ms. Bohy for facilitating this wonderful student run production.

Great Job Fourth Grade!!

Buddy Classes are Positive for all Participants

“Students thoroughly enjoyed working with each other. It was a relationship building activity and a lot of fun!”



Miss Algenius’ fifth grade students met with their second grade buddies from Mrs. Kline’s class and made terrific gingerbread houses.

Students thoroughly enjoyed working with each other. It was a relationship building activity and a lot of fun!

Social Development Information



We will kick off 2010 at Chester Elementary with a Town Meeting on Thursday, January 14th at 8:45 pm. Our second grade hosts will be demonstrating some creative ways to cooperate and introduce our social development focus of the month.

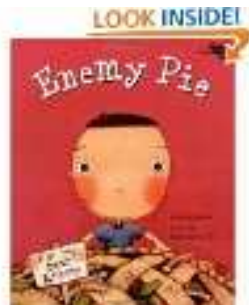
If you haven't already guessed, our January focus is indeed "cooperation", and we are hoping that we all find some new and different ways to cooperate during the month.

Please save the date: Our 11th Annual Social Development Night is Thursday, March 18th. The time has yet to be determined. Please mark your calendar and get ready for an evening of family fun with a social development theme. And of course, those delicious ice cream sundaes will top off the evening.

*"Please save the date:
Our 11th Annual
Social Development
Night is Thursday,
March 18th. The time
has yet to be
determined."*

Social Development Book of the Month

The goal of our Social Development Book-of-the-Month is to integrate literature and concomitant language arts objectives with themes and ideas that support our social development program.



Enemy Pie by Derek Munson

Enemy Pie serves up a sweet lesson in the difficulties and ultimate rewards of making new friends. What should have been a perfect summer for one young boy is ruined when Jeremy Ross moves in and becomes number one on the narrator's enemy list. Fortunately, his father has a secret recipe for a pie that is guaranteed to help get rid of enemies. While Dad works on mixing the ingredients and baking the pie, he explains his son's role in the plan: "-you need to spend a day with your enemy. Even worse, you have to be nice to him." It sounds tough, but the boy decides to give it a try. Predictably, between throwing water balloons at the girls, playing basketball, and hiding out in the tree house, he decides that Jeremy is not so bad after all. There's still the problem of the pie, however. When his father serves up the dessert, the young protagonist decides to warn Jeremy that it is "poisonous or something." However, it seems that both his father and his new friend are just fine, and what's more, the pie is delicious. This is a clever tale with an effective message about how to handle relationships and conflict. (excerpt from Amazon.com)

The Chester Public Library is graciously partnering with us on our social development book of the month initiative. Our book of the month is displayed at the library and there are multiple copies available for families to borrow so that the discussion begun at school can be shared and extended at home.

*"The Chester Public
Library is graciously
partnering with us on
our social develop-
ment book of the
month initiative."*

Chester Parks and Recreation November Announcements

Call 526-0013, extension 223 or visit chesterct.org for information or registration.



Early Dismissal Day - Hotshots Basketball Competition

Students in grades 3 through age 15, begin with a practice in the multi-purpose room at Chester Elementary School, following the 1:00pm dismissal on January 8. Children practice for the contest, have a snack, and, compete in the contest at 2:45. The program will end at 4:00pm. Winners in the 9 and 10 year-old, 11 and 12 year-old, and 13 to 15 year-old Hotshot competition are eligible to compete on the State level. Students who are younger than 9 years old on 12/31/09 are not eligible to compete in on the State level, but are welcome to participate in the Chester program. There is no fee. Please register by December 29.



Sports Center of Connecticut



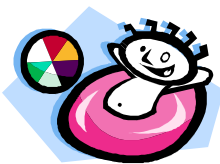
There is no school on Tuesday, January 19, 2010.

Chester Parks and Recreation will sponsor a field trip to the Sports Center of Connecticut, in Shelton, for children in grades one through eight.

The bus will depart from the Chester Community Center at 8:45am and return at 3:30pm.

Activities will include Jungle Laser Tag, Fun-Bowl, and Ice Skating.

The fee is \$50. Please bring your own lunch. Space is limited!



Early Dismissal Day - CoCo Key Indoor Water Park

Children in grades 1 through 8 may ride the school bus following the early dismissal on February 12 to CoCo Key Water Resort in Waterbury. Pizza will be served at the event. We will return at 5:30pm. The fee is \$38. Please register by January 27!



Ice Skaters!

Please remember, the ice in Chester is not monitored for safety!